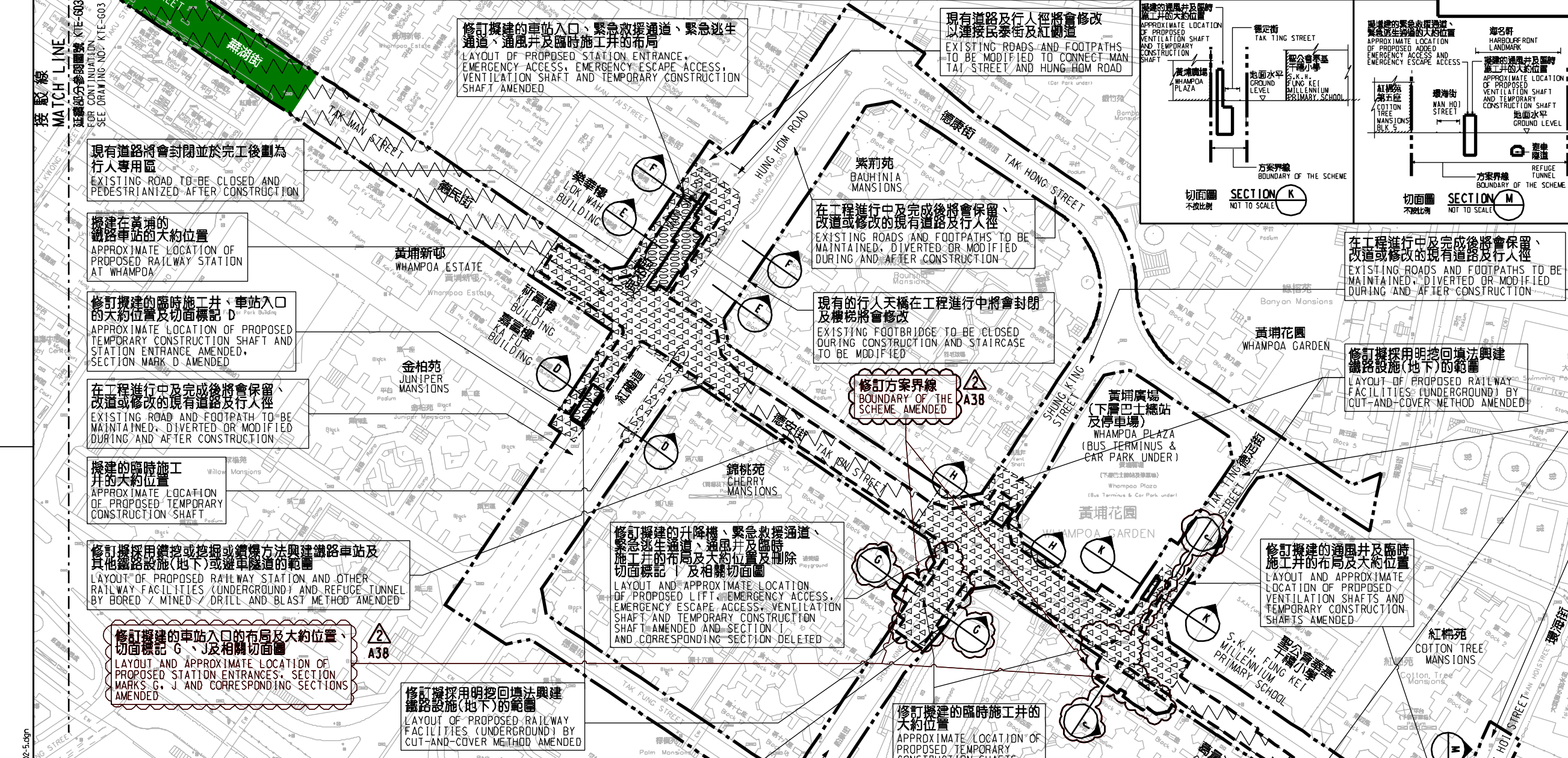


說明 NOTES
 此圖根據第 KTE-G04 號 (修改2) 圖則訂制, 以深綠色標明將暫時封閉的部分蕪湖街路段。
 THIS DRAWING IS PREPARED BASED ON DRAWING NO. KTE-G04 (REVISION 2) AND IS INTENDED TO SHOW THE TEMPORARY PARTIAL CLOSURE OF WUHU STREET (HIGHLIGHTED IN DARK GREEN).



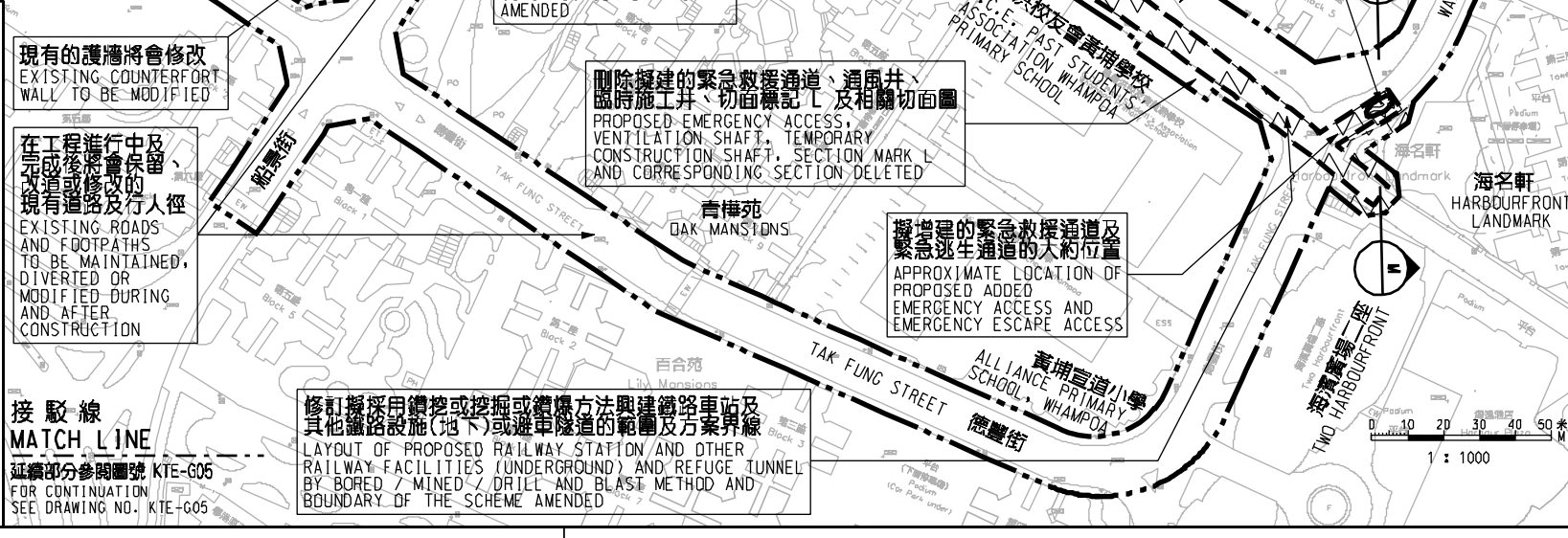
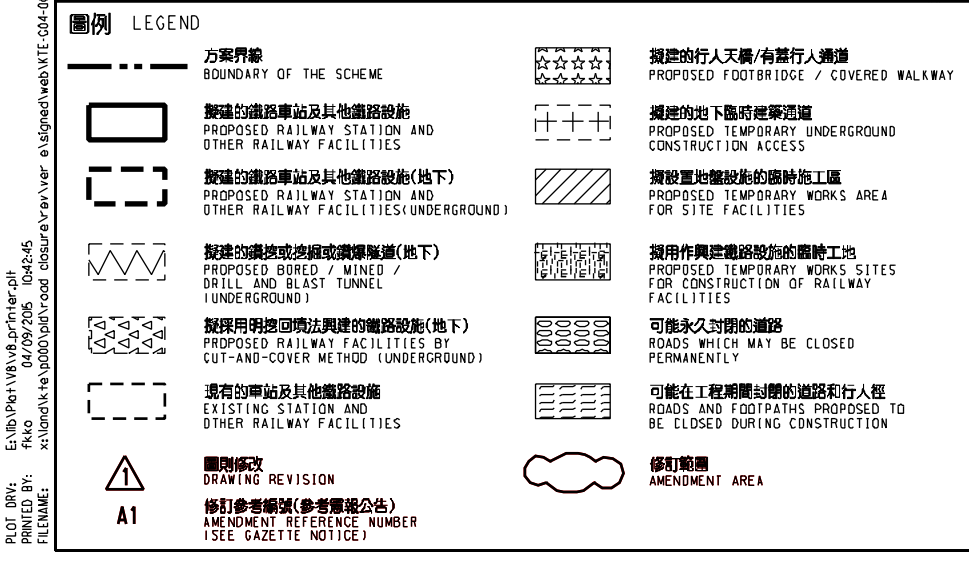
一般說明 GENERAL NOTES

1. 有關一般說明參閱圖號 KTE - G01.
 FOR GENERAL NOTES, REFER TO DRAWING NO. KTE - G01.

REV	DATE	BY	CHK	APP	說明 DESCRIPTION

SIGNED
 2/9/2015
 簽發日期 DATE OF ISSUE

簽發人: 曹榮平 FRANKIE W P CHOW
 職銜: 署工務處處長 (第 1-3)
 CHIEF ENGINEER / RAILWAY DEVELOPMENT (1-3)
 HIGHWAYS DEPARTMENT



圖則名稱 DRAWING TITLE
 鐵路條例(第519章)
 觀塘線延線
 暫時封閉蕪湖街
 RAILWAYS ORDINANCE (CHAPTER 519)
 KWUN TONG LINE EXTENSION
 TEMPORARY CLOSURE OF WUHU STREET

圖號 DRAWING NO. KTE/G04/002/5
 比例 SCALE 1:1000 (A1)
 或顯示 AS SHOWN

香港特別行政區政府
 THE GOVERNMENT OF THE HONG KONG
 SPECIAL ADMINISTRATIVE REGION
路政署
 HIGHWAYS DEPARTMENT
鐵路拓展處
 RAILWAY DEVELOPMENT OFFICE

Plot: 04/09/2015
 File: x:\loma\k-te\p000\p01\rev\01\signed\web\k-te-g04-0002-5.dgn